



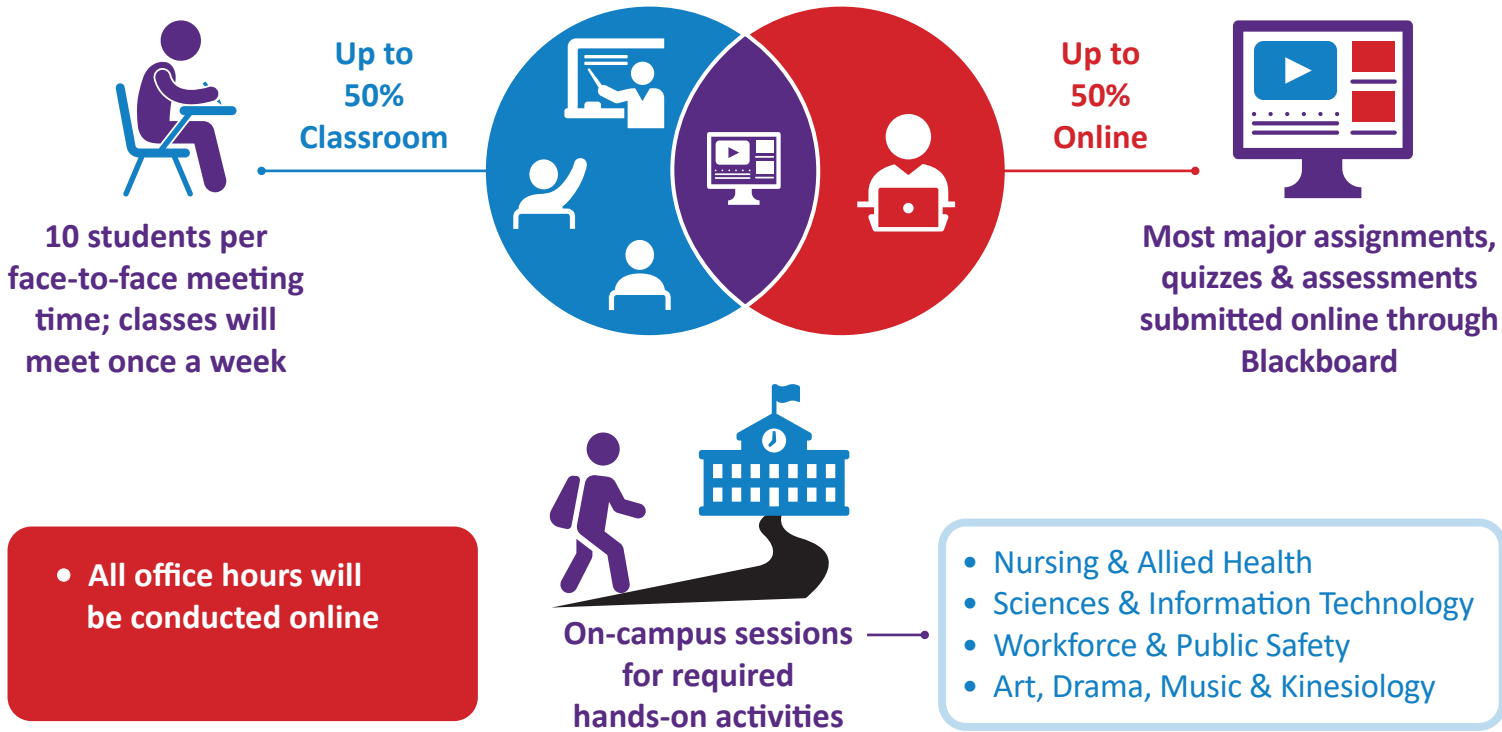
# Fall 2020 Semester

South Texas College will offer  
In-Person Hybrid in addition to Online Courses

Classes  
start  
Monday  
August 24

Important: First week of all classes (8/24 - 8/28), including in-person hybrid, will be Online

## What you need to know about In Person-Hybrid Courses



**NEED TUTORING OR ACCESS TO A COMPUTER?**

- CLE (tutoring) and Library services available both online and on campus
- Open Labs available on campus

Technology support available online and by phone seven days a week

Phone: 956-872-2598

Email: [support@southtexascollege.edu](mailto:support@southtexascollege.edu)

- Face masks required
- Rooms disinfected between classes
- Social distancing maintained

Do not visit the campus if you are experiencing COVID-19 symptoms or have been in contact with someone who has or thinks they may have COVID-19

*The safety and well-being of all South Texas College students, faculty, and staff is our highest priority. This course structure may be modified should new state or federal guidelines be released.*

For more details, visit our website at [www.southtexascollege.edu](http://www.southtexascollege.edu)