

Fall to Spring Retention by Remediation Status of First Time in College (FTIC) Cohorts

	All FTIC *			Received Remediation **			Did not Receive Remediation		
	Fall	Spring	% Returned	Fall	Spring	% Returned	Fall	Spring	% Returned
Total 2003	3,816	3,097	81%	1,391	1,101	79%	2,425	1,996	82%
Full-Time (12+ SCH)	1,312	1,085	83%	982	803	82%	330	282	85%
Part-Time (6-11 SCH)	1,265	1,045	83%	398	293	74%	867	752	87%
Part-Time (1-5 SCH)	1,239	967	78%	11	5	45%	1,228	962	78%
Academic Majors	760	625	82%	644	521	81%	116	104	90%
Technical Majors***	889	700	79%	586	460	78%	303	240	79%
Total 2004	2,290	1,852	81%	1,561	1,256	80%	729	596	82%
Full-Time (12+ SCH)	1,699	1,422	84%	1,147	960	84%	552	462	84%
Part-Time (6-11 SCH)	558	413	74%	403	293	73%	155	120	77%
Part-Time (1-5 SCH)	33	17	52%	11	3	27%	22	14	64%
Academic Majors	969	788	81%	723	580	80%	246	208	85%
Technical Majors***	1,194	967	81%	767	618	81%	427	349	82%
Total 2005	2,106	1,715	81%	1,456	1,179	81%	650	536	82%
Full-Time (12+ SCH)	1,535	1,291	84%	1,094	906	83%	441	385	87%
Part-Time (6-11 SCH)	535	398	74%	355	267	75%	180	131	73%
Part-Time (1-5 SCH)	36	26	72%	7	6	86%	29	20	69%
Academic Majors	928	759	82%	698	565	81%	230	194	84%
Technical Majors***	1,012	832	82%	650	533	82%	362	299	83%
Total 2006	3,126	2,343	75%	1,987	1,468	74%	1,139	875	77%
Full-Time (12+ SCH)	1,978	1,588	80%	1,305	1,022	78%	673	566	84%
Part-Time (6-11 SCH)	1,012	681	67%	652	421	65%	360	260	72%
Part-Time (1-5 SCH)	136	74	54%	30	25	83%	106	49	46%
Academic Majors	1,643	1,213	74%	1,068	778	73%	575	435	76%
Technical Majors***	1,468	1,130	77%	913	690	76%	555	440	79%
Total 2007	2,953	2,360	80%	1,581	1,242	79%	1,372	1,118	81%
Full-Time (12+ SCH)	1,981	1,666	84%	1,052	864	82%	929	802	86%
Part-Time (6-11 SCH)	895	662	74%	508	370	73%	387	292	75%
Part-Time (1-5 SCH)	77	32	42%	21	8	38%	56	24	43%
Academic Majors	1,682	1,376	82%	929	751	81%	753	625	83%
Technical Majors***	1,260	973	77%	650	489	75%	610	484	79%

* Data were derived by matching the Fall degree seeking (including Undeclared Degree-Seeking Majors) FTIC cohort against Spring enrollment to determine retention from Fall to Spring. Non-degree seeking students were not included in order to match IPEDS definition of FTIC of which also includes all students reported on Fall CBM001 who a) never attended college before, or b) enrolled for the first time during the prior Summer term at the institution.

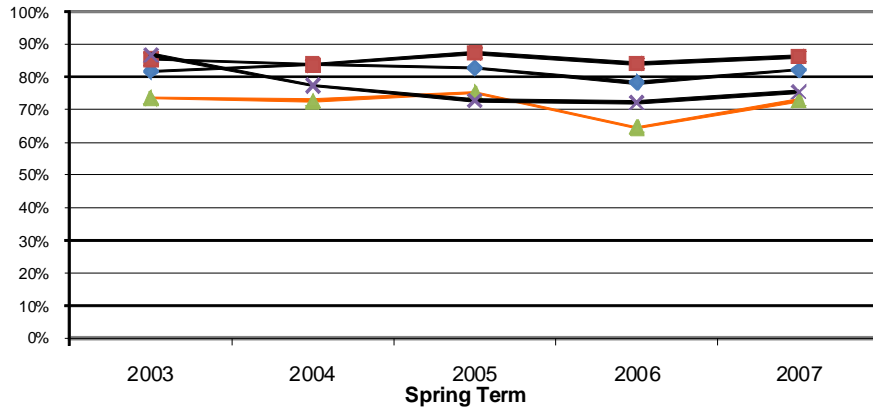
** Includes FTIC students who received

*** Technical programs expected to

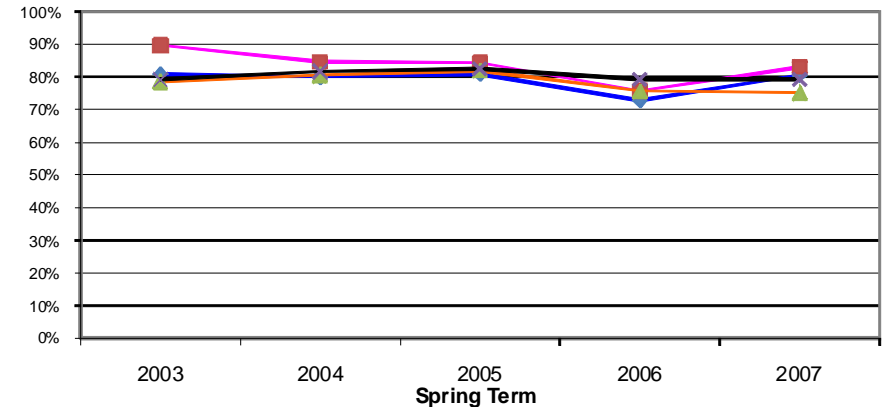
Source: CBM001 Census Data

Fall to Spring Retention by Remediation Status of First Time in College (FTIC) Cohorts (continued)

Fall to Spring Retention by Remediation Status of Full-Time (FT) and Part-Time (PT) FTIC



Fall to Spring Retention by Remediation Status of FTIC Academic and Technical Majors



Fall to Spring Retention by Remediation Status of All Fall FTIC

