

# Academic Success After Developmental Studies in Reading

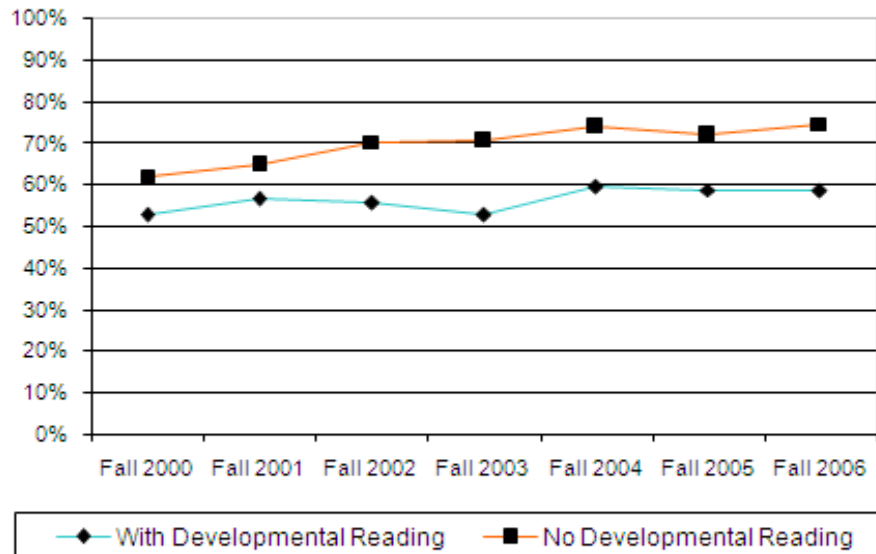
## Success Rates in College Level Courses by Students Previously Enrolled in Developmental Courses

Students Enrolled in HIST 1301 by Term	Total Enrolled	Students With Developmental Reading						Students With No Developmental Reading							
		Total W/ Dev.	A, B, C, D, P		F, I, NP		Withdrawn (W)		Total No Dev.	A, B, C, D, P		F, I, NP		Withdrawn (W)	
			#	%	#	%	#	%		#	%	#	%	#	%
Fall 2000	1,343	174	92	53%	29	17%	53	30%	1,169	727	62%	213	18%	229	20%
Spring 2001	825	139	80	58%	20	14%	39	28%	686	368	54%	137	20%	181	26%
Summer I 2001	372	57	35	61%	4	7%	18	32%	315	232	74%	29	9%	54	17%
Summer II 2001	163	22	18	82%	2	9%	2	9%	141	106	75%	15	11%	20	14%
Fall 2001	1,503	212	120	57%	50	24%	42	20%	1,291	838	65%	230	18%	223	17%
Spring 2002	792	154	94	61%	21	14%	39	25%	638	376	59%	106	17%	156	24%
Summer I 2002	409	80	68	85%	3	4%	9	11%	329	280	85%	18	5%	31	9%
Summer II 2002	138	18	13	72%	2	11%	3	17%	120	80	67%	15	13%	25	21%
Fall 2002	1,926	301	168	56%	48	16%	85	28%	1,625	1,144	70%	237	15%	244	15%
Spring 2003	916	201	117	58%	43	21%	41	20%	715	432	60%	151	21%	132	18%
Summer I 2003	325	60	31	52%	10	17%	19	32%	265	193	73%	35	13%	37	14%
Summer II 2003	186	24	22	92%	0	0%	2	8%	162	138	85%	16	10%	8	5%
Fall 2003	2,305	347	183	53%	61	18%	103	30%	1,958	1,386	71%	225	11%	347	18%
Spring 2004	1,105	287	189	66%	40	14%	58	20%	818	483	59%	142	17%	193	24%
Summer I 2004	496	103	84	82%	14	14%	5	5%	393	325	83%	44	11%	24	6%
Summer II 2004	167	21	16	76%	1	5%	4	19%	146	101	69%	10	7%	35	24%
Fall 2004	2,752	418	249	60%	63	15%	106	25%	2,334	1,725	74%	262	11%	347	15%
Spring 2005	1,104	275	148	54%	58	21%	69	25%	829	488	59%	146	18%	195	24%
Summer I 2005	232	44	32	73%	9	20%	3	7%	188	157	84%	19	10%	12	6%
Summer II 2005	175	28	24	86%	3	11%	1	4%	147	123	84%	9	6%	15	10%
Fall 2005	2,048	343	202	59%	64	19%	77	22%	1,705	1,230	72%	214	13%	261	15%
Spring 2006	1,100	301	171	57%	61	20%	69	23%	799	530	66%	134	17%	135	17%
Summer I 2006	369	63	44	70%	7	11%	12	19%	306	242	79%	32	10%	32	10%
Summer II 2006	124	26	12	46%	6	20%	8	31%	98	74	76%	6	6%	18	18%
Fall 2006	2,431	421	246	58%	80	19%	95	23%	2,010	1,502	75%	257	13%	251	12%
Spring 2007	1,130	297	164	55%	61	21%	72	24%	833	457	55%	163	20%	213	26%
Summer I 2007	356	81	68	84%	7	9%	6	7%	275	230	84%	20	7%	25	9%
Summer II 2007	171	26	24	92%	2	20%	0	0%	145	120	83%	10	7%	15	10%

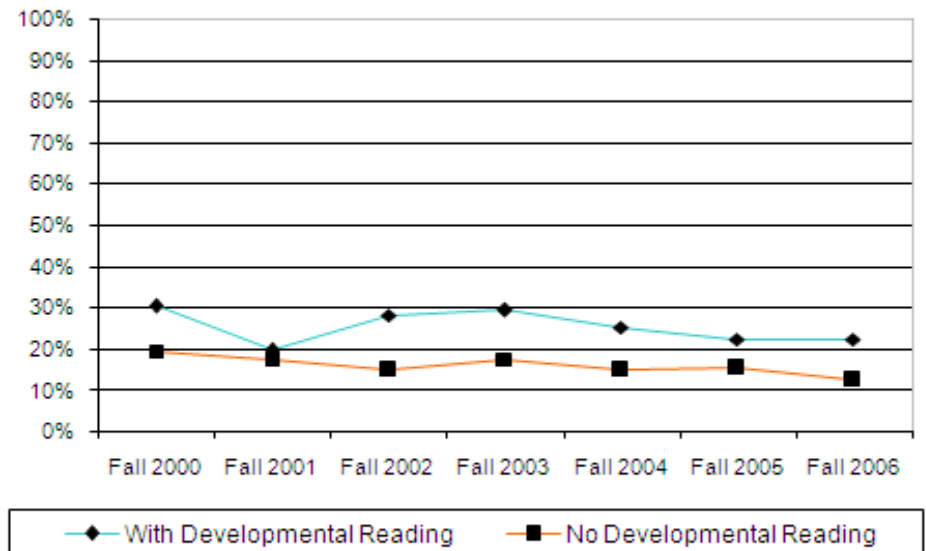
## Academic Success After Developmental Studies in Reading (continued)

### Success Rates in College Level Courses by Students Previously Enrolled in Developmental Courses

Progress Rate in HIST 1301 by Developmental Reading History



Withdrawal Rate in HIST 1301 by Developmental Reading History



Note: "Students With Developmental" includes students who received a grade of A, B, C, D, F, I, P, NP, or W in the specified developmental course prior to the term they enrolled in HIST 1301 (U.S. History 1).

Based on chi-square of Fall 2006: Difference in progress rates between students with a Developmental history and no Developmental history is significant at  $P < .01$ . Differences in withdraw rate between students with a Developmental history and no history is significant at  $P < .01$ .