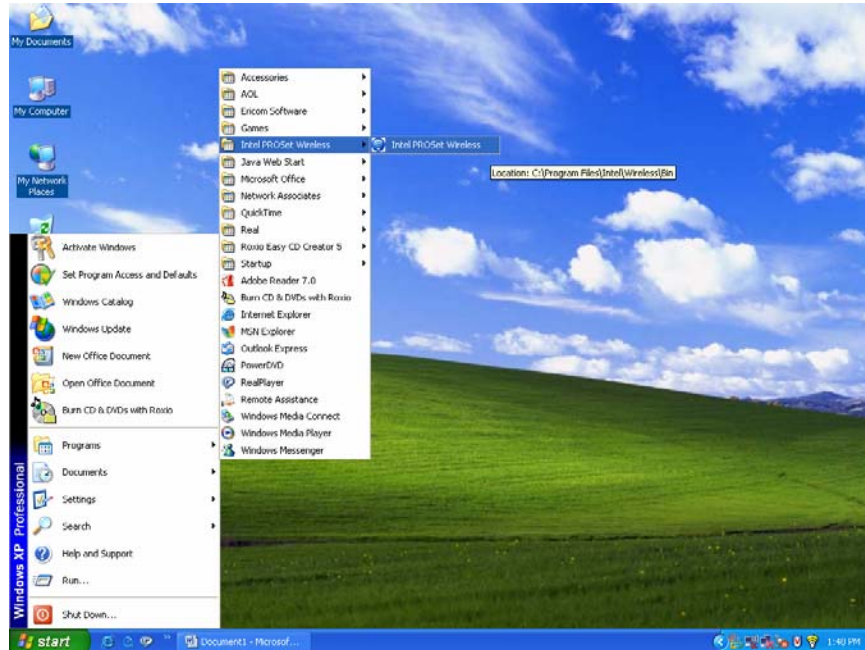
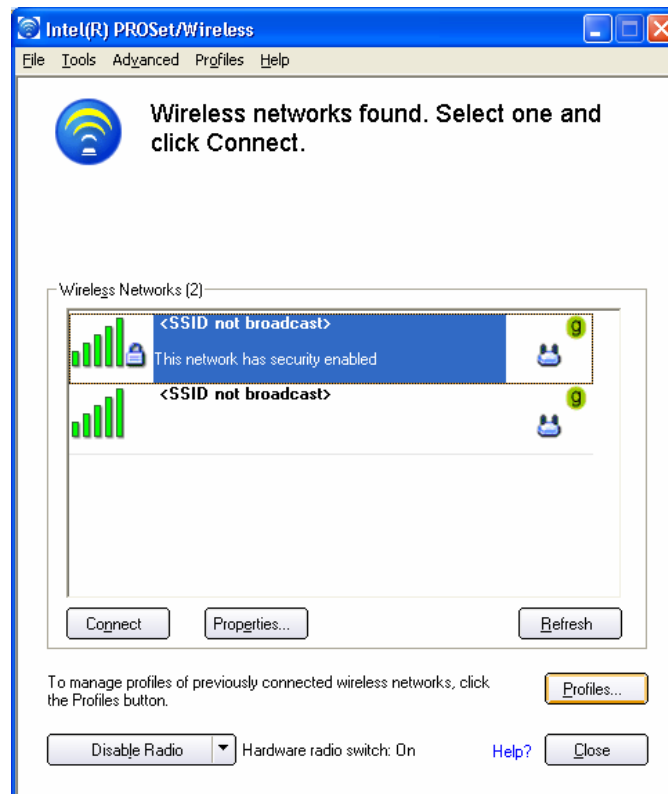


Faculty/Staff Wireless Account Installation Instructions

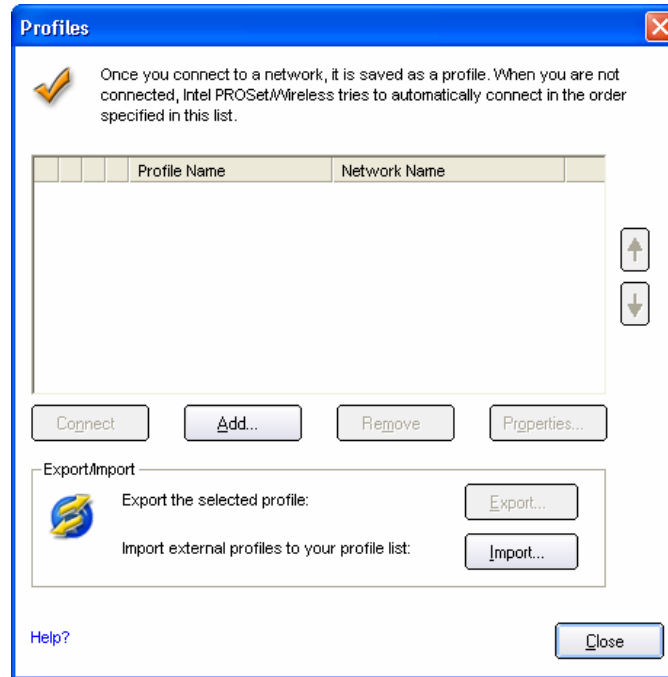
Create a profile using the software provided with your wireless card:
Note: This may differ from the one presented in this handout



Create a profile for the new wireless account:
- click on the profiles button to open a new window

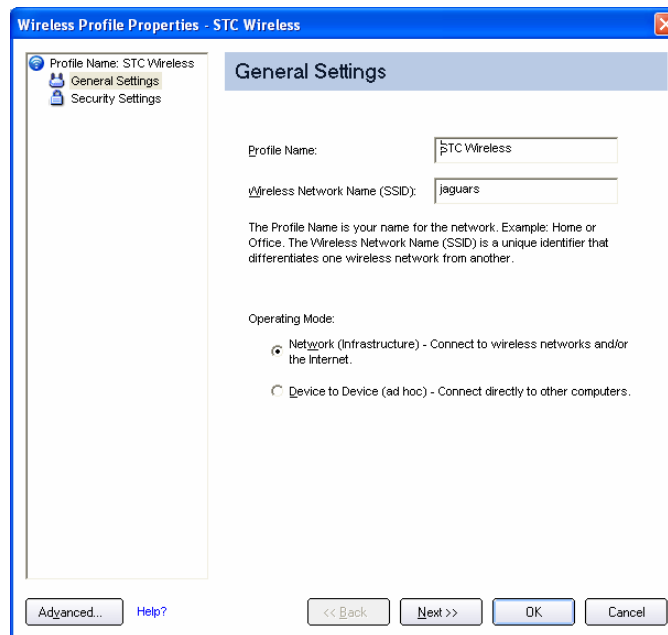


Click on the add button to create a new profile:



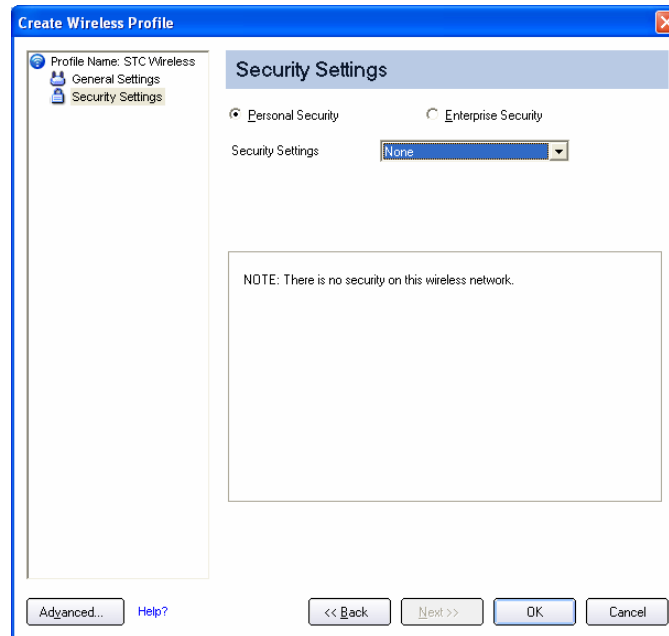
The window for General Settings should now be open:

- Enter "STC Wireless" for profile name
- Enter "jaguars" for Wireless Network Name (SSID)
- Make sure Network Infrastructure is selected for Operating Mode
- Click the Next button to move on to the security screen



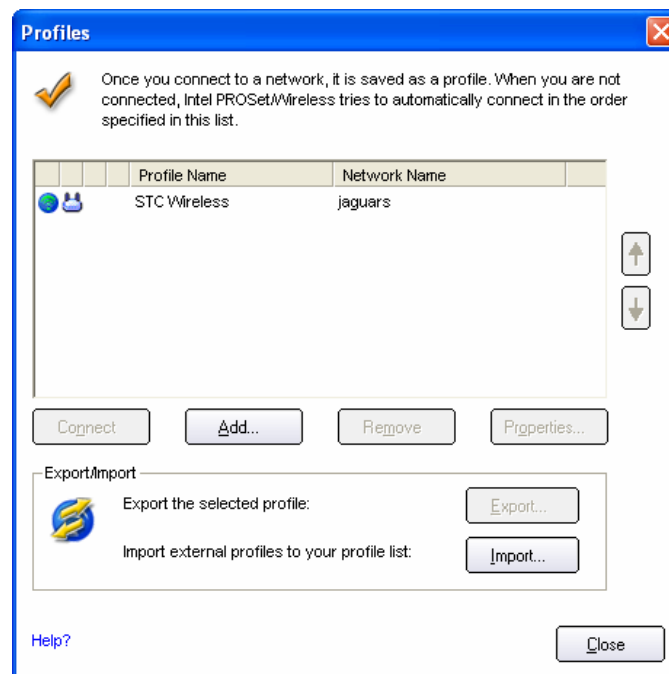
The Security Settings window should now be open:

- If given the option, select Personal Security
- Select None for Security Settings
 - o Please note that this is an open connection, and your data will not be encrypted!
- Click OK

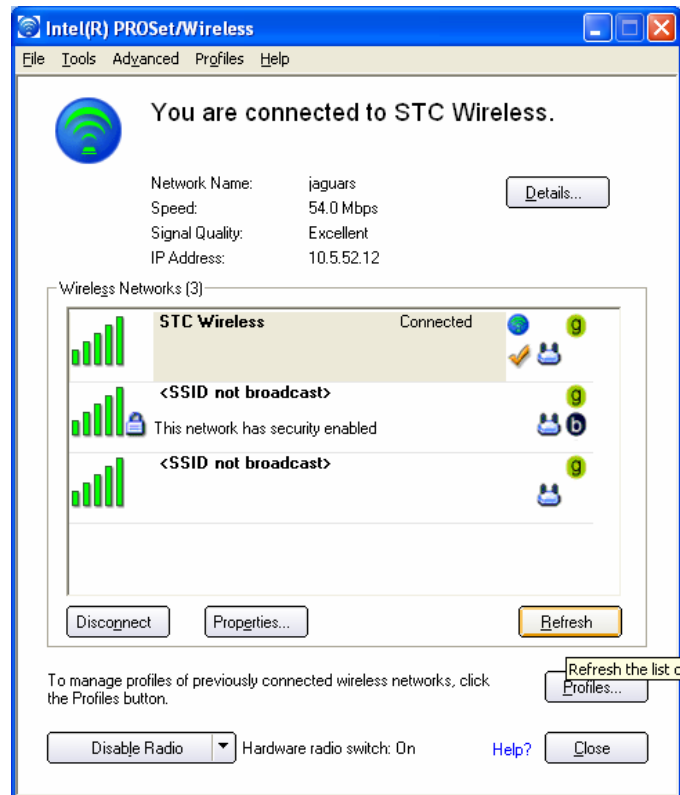


You should be back at the profiles window and your profile should now be in the profiles list

- highlight the profile you just created
- once it is highlighted click on the connect button
- click on close to take you back to your wireless card software to check the status of your connection

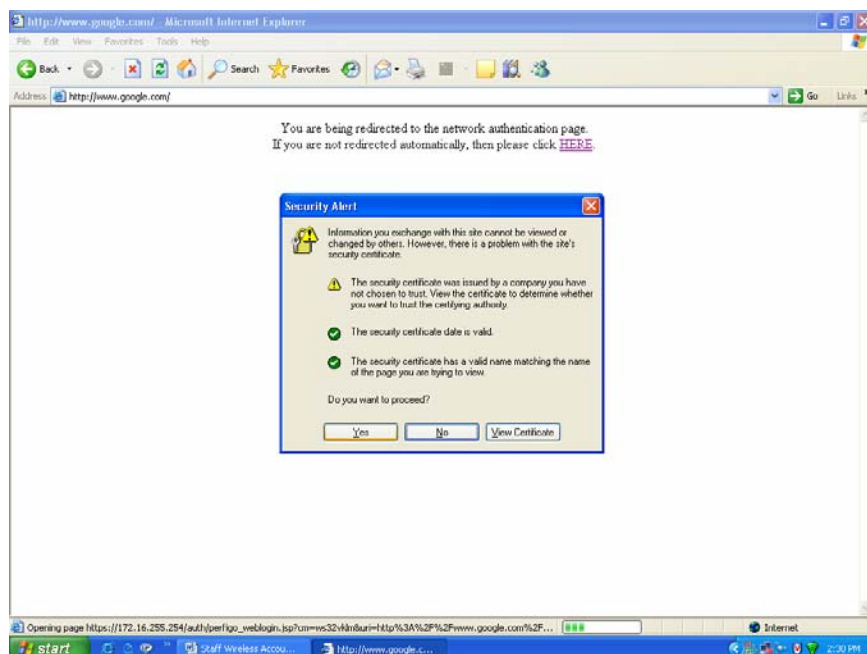


You should now be connected to the STC Wireless network. Either minimize or close the wireless card software.



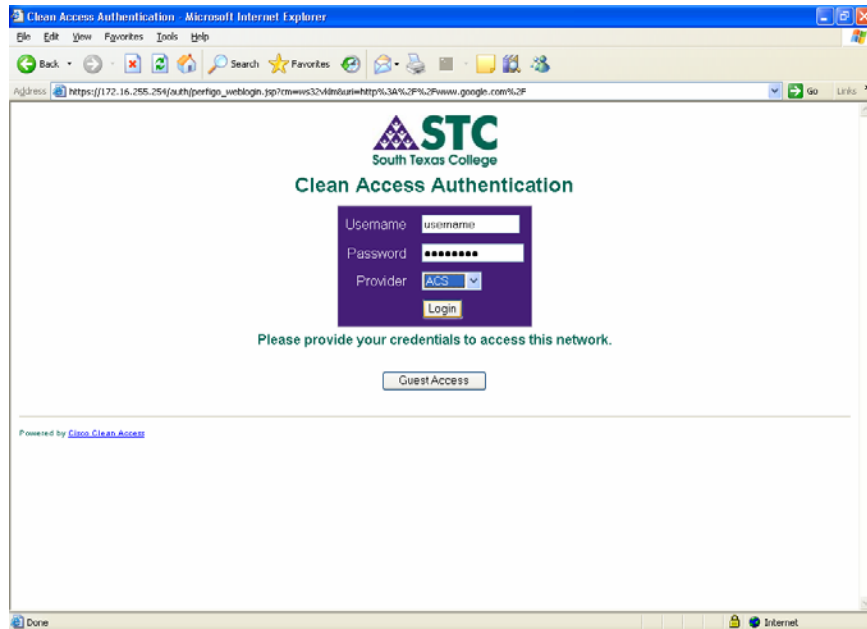
Open up Internet Explorer

- type in any webpage other than the default webpage (example: www.google.com)
- the following webpage will appear advising you that you are being redirected to another webpage
- Click on the YES button in the Security Alert window



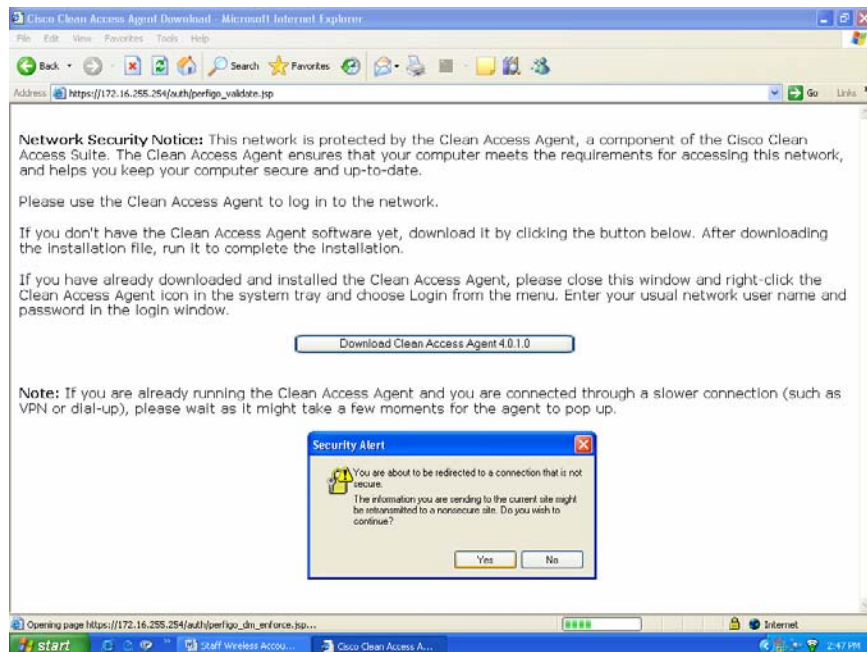
You should now see a “Clean Access Authentication” window:

- enter your username (same as your e-mail username)
- enter your password (same as your e-mail password)
- Select “ACS” as your provider
- Click on the Login button

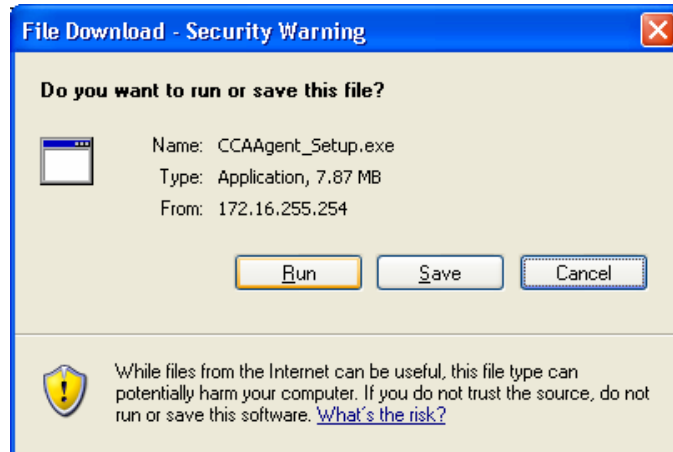


The Cisco Clean Access Agent Download window will appear:

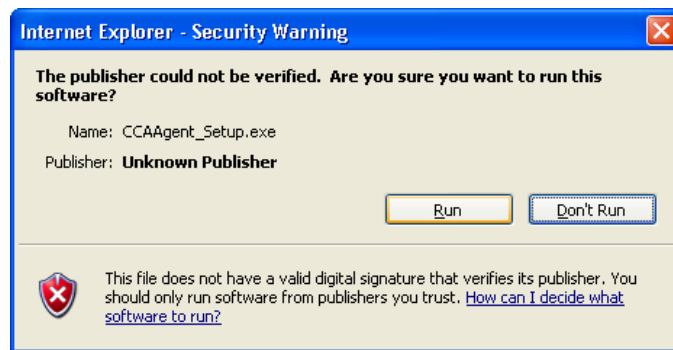
- click on the Download Clean Access Agent button
- click Yes on the security Alert Window



Click the Run button on the File download window:



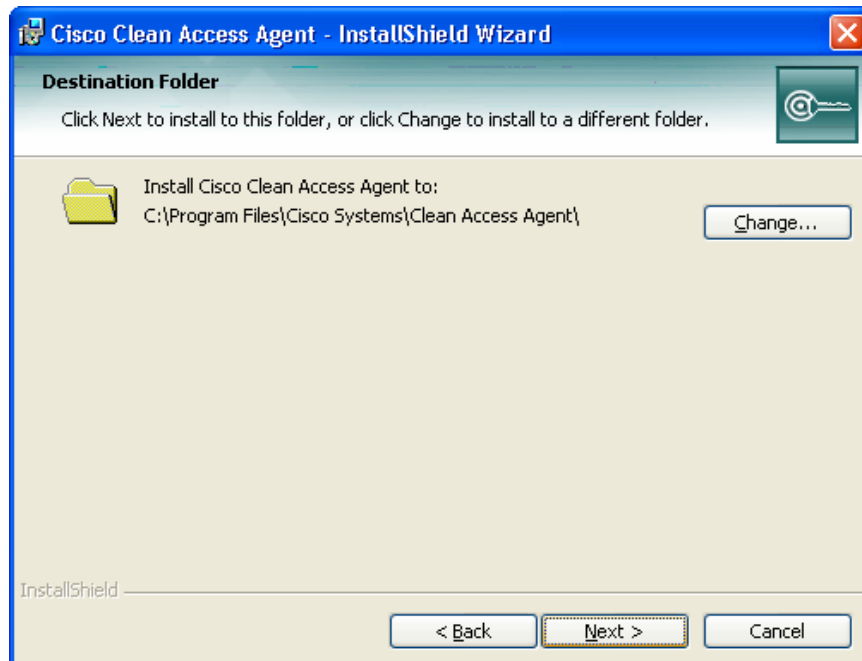
Click the Run button on the Security Warning window:



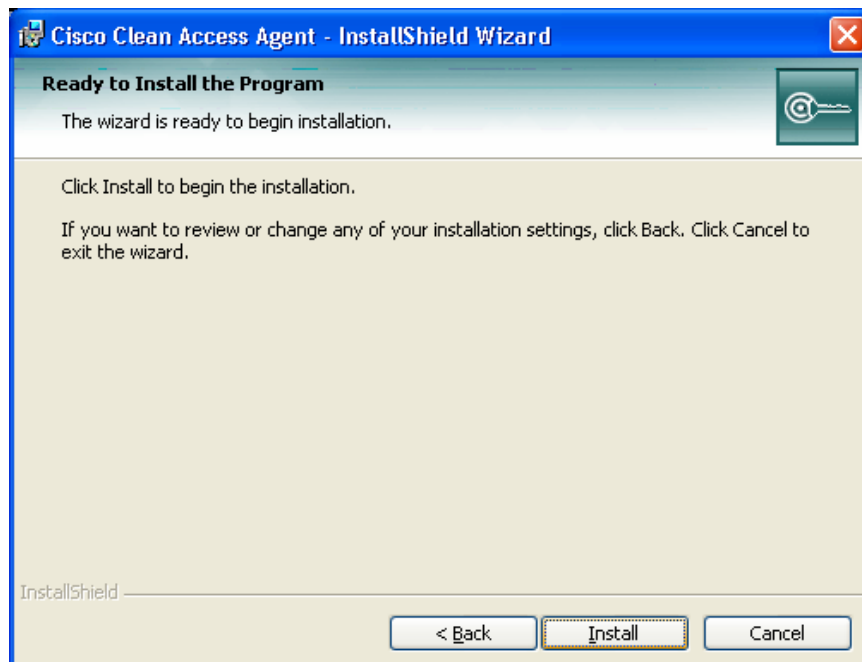
Click the Next button on the Cisco Clean Access Agent - InstallShield Wizard:



Click Next on the Destination Folder window:



Click the Install button on the Ready to Install the Program window:



Click the Finish button once the install is completed:



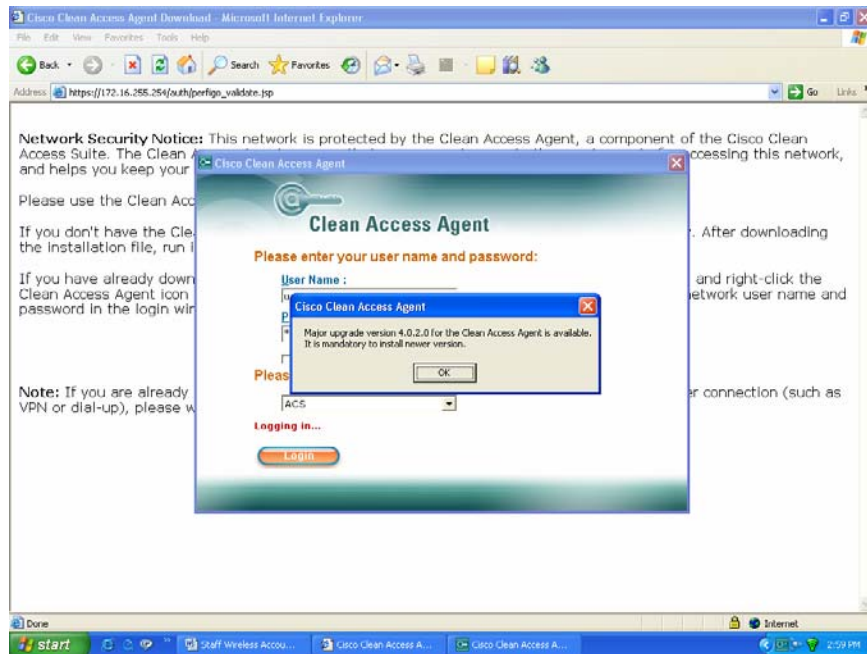
The Cisco Clean Access Agent login window appears after installation:

- enter your username (same as your JagNet username)
- enter your password (same as your JagNet password)
- select JagNet as your Authentication Provider
- click the Login button

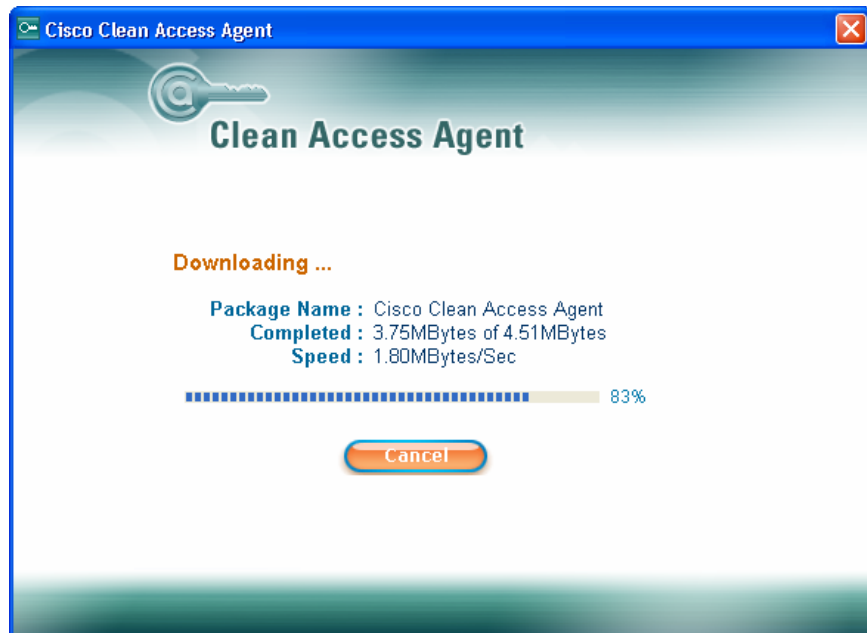


Once you login, it will prompt you to download a required update:

- click the OK button to download and install the update



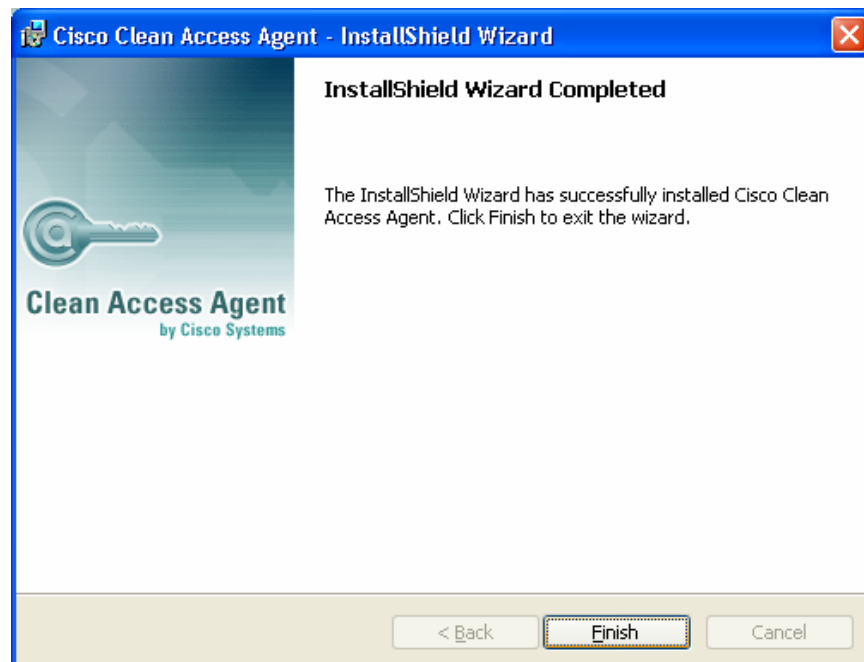
The following window will appear momentarily:



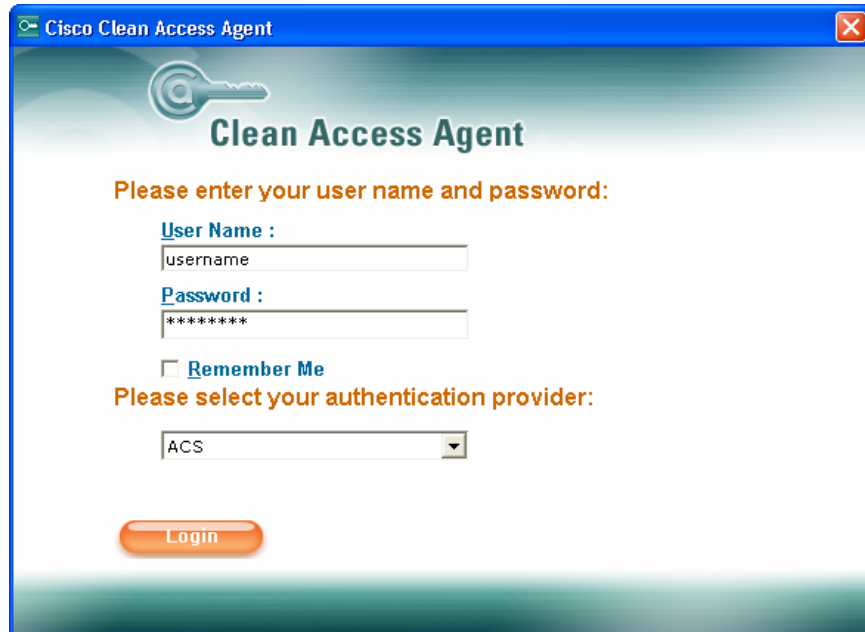
Click the Next button on the Cisco Clean Access Agent – InstallShield Wizard



If any security alert windows appear select the Yes button. Once the install is done click the Finish button.

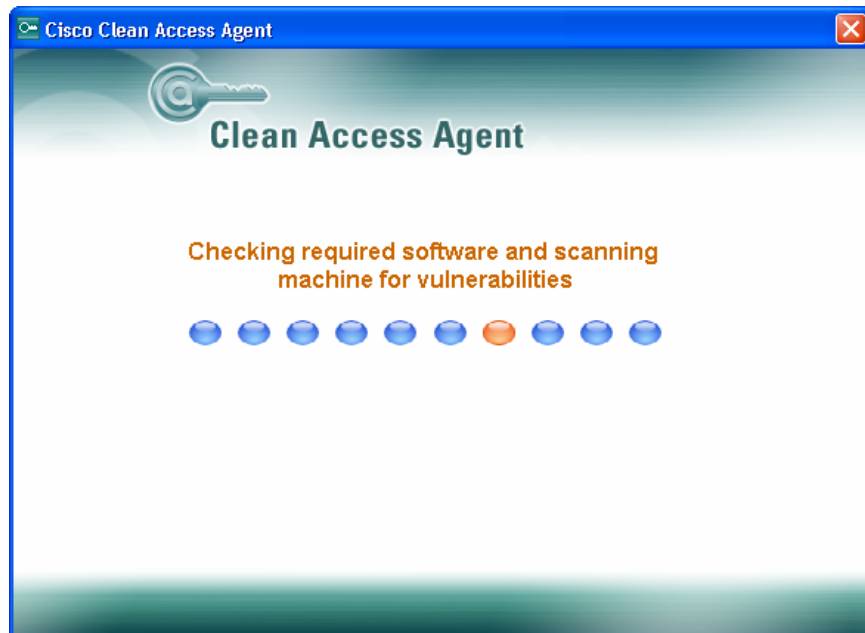


Log in to the Clean Access Agent once again.



The screenshot shows the Cisco Clean Access Agent login interface. At the top, the window title is "Cisco Clean Access Agent". Below the title is a key icon and the text "Clean Access Agent". The main heading is "Please enter your user name and password:". There are two input fields: "User Name :" with the text "username" and "Password :" with "*****". Below these is a checkbox labeled "Remember Me". The next heading is "Please select your authentication provider:" with a dropdown menu showing "ACS". At the bottom is a "Login" button.

The agent will go through and scan the machine for any vulnerability:



Review and accept STC Network Policies and Guidelines:

- click the Accept button



Welcome to STC's Wireless Network!

- press the OK button to successfully browse the Internet and access network resources

